



ENGINEERING & OPERATIONS

PO Box 1110, Tampa, FL 33601-1110

813-276-2530 | Fax: (813) 272-5811

TRANSPORTATION DESIGN BULLETIN 22-05

DATE: September 14, 2022

TO: County Director of Engineering & Operations Department,
County Director of Capital Programs Department,
County Manager of Construction Services,
County Director of Transportation Maintenance Division,
County Project Managers, and Project Engineers of Record

FROM: County Engineer,
County Director of Technical Services Division

COPIES: County Director of Performance Data and Analytics Department

SUBJECT: TYPICAL SECTION PACKAGE APPROVAL PROCESS

This bulletin announces the Typical Section Package (TSP) approval process for Hillsborough County Transportation Projects. This TSP process is required for all Projects to obtain approval of any modification of the road's cross-sectional elements.

REQUIREMENTS

Typical Section Package is required for all Hillsborough County Capital Improvement Program (CIP) Projects to obtain approval of any modification of the road's cross-sectional elements. The TSP must be submitted prior to the layout of the project geometry. This approval must be obtained for Project Development and Environment Studies (PD&E) and Preliminary Engineering Reports (PER).

For design projects that are not preceded by a PD&E or PER, the TSP must be submitted and approved as early as possible after receiving notice to proceed and prior to design and development of Construction Plans.

The TSP approval process must follow the procedure outlined below:

- 1) TSP must include:
 - Cover Sheet with relevant information (see Page 3). The Cover Sheet contains the following:
 - i. Project Identification
 - ii. Project Location Map
 - iii. Engineer of Record Signature Block
 - iv. Typical Section Approval Block

**BOARD OF COUNTY
COMMISSIONERS**

Harry Cohen

Ken Hagan

Pat Kemp

Gwendolyn "Gwen" Myers

Kimberly Overman

Mariella Smith

Stacy R. White

COUNTY

ADMINISTRATOR

Bonnie M. Wise

COUNTY ATTORNEY

Christine M. Beck

INTERNAL AUDITOR

Peggy Caskey

PUBLIC WORKS

ADMINISTRATOR

John W. Lyons

- Typical Section Sheet (see Examples Pages 4 to 6). The proposed Typical Section sheet contains the following:
 - i. Project Controls
 - Hillsborough County Context Classification
 - Functional Classification
 - Access Classification
 - Criteria
 - ii. Potential Design Exceptions and Design Deviations
 - iii. Traffic Data
 - iv. Roadway or Bridge Typical Section Drawing(s)

2) The TSP must be submitted to the County Project Manager and forwarded to the Technical Services Division for review and approval.

BACKGROUND

There has not been an official formal process for approval of Typical Section elements at early stages of Hillsborough County Transportation projects. The process introduced in this bulletin ensures a consistent approval process for Typical Sections, so the desired cross sectional elements are included to achieve the vision zero objectives of safety and mobility.

IMPLEMENTATION

Effective Immediately.

CONTACT

Please use the email link below to address any questions or comments in reference to this Design Bulletin:

[PW-Standards Inquiry](#)

Recommended / Date:

Approved / Effective Date:

Leland Dicus, Professional Engineer
 Technical Services Division Director

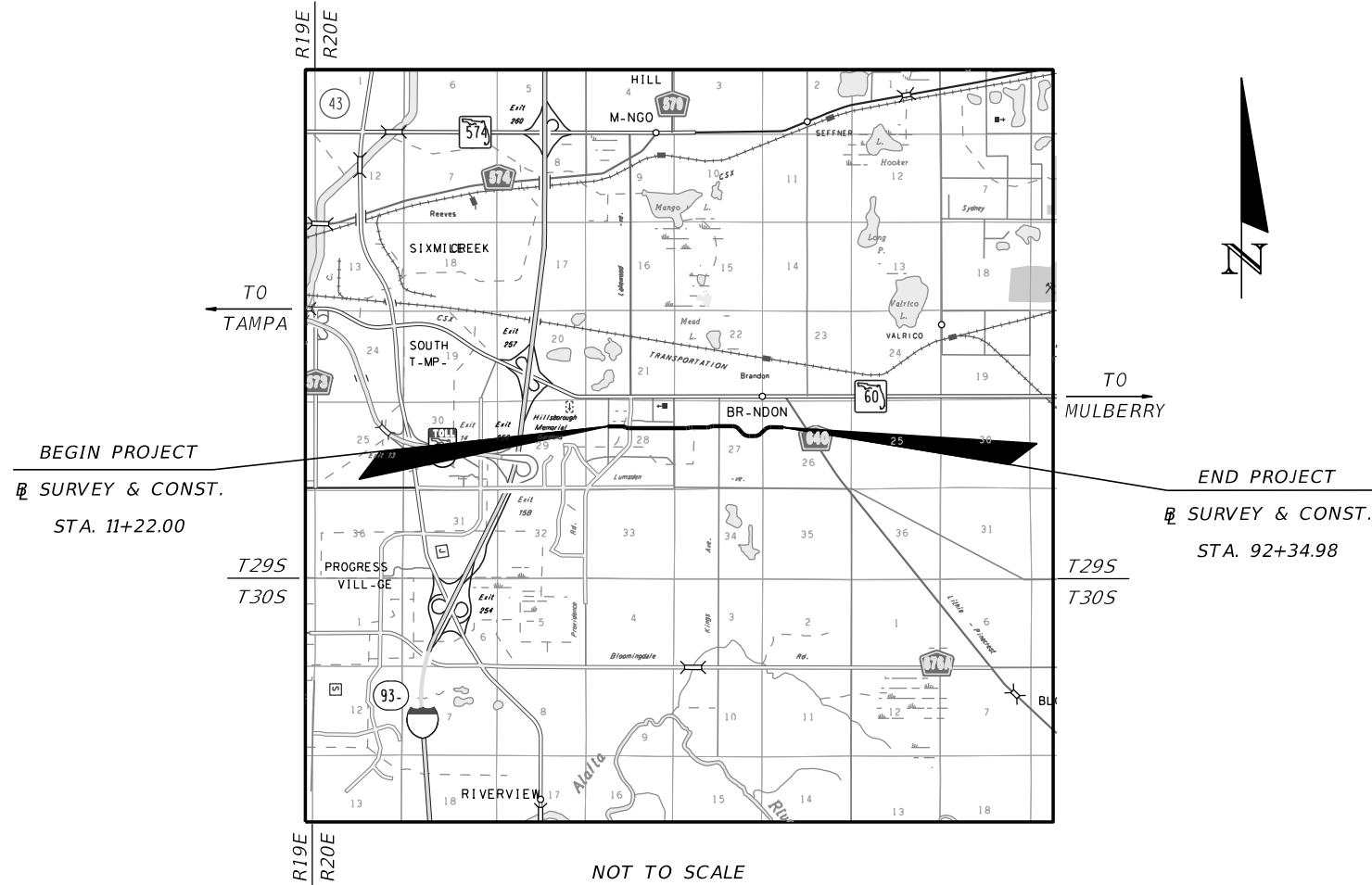
Michael J. Williams, Professional Engineer
 County Engineer

HILLSBOROUGH COUNTY FLORIDA

TYPICAL SECTION PACKAGE

COUNTY CAPITAL IMPROVEMENT

PROGRAM NUMBER XXX-XXX



LOCATION MAP

SECTIONS 27 & 28, TOWNSHIP 29S, RANGE 20E

APPROVED BY:

THIS ITEM HAS BEEN DIGITALLY
SIGNED AND SEALED BY:

ON THE DATE ADJACENT TO THE SEAL
PRINTED COPIES OF THIS DOCUMENT ARE
NOT CONSIDERED SIGNED AND SEALED
AND THE SIGNATURE MUST BE VERIFIED
ON ANY ELECTRONIC COPIES.

NAME OF THE PROFESSIONAL ENGINEER
NAME OF THE ENGINEERING FIRM
ADDRESS OF THE ENGINEERING FIRM

THE ABOVE NAMED PROFESSIONAL ENGINEER SHALL BE RESPONSIBLE FOR THE
FOLLOWING SHEETS IN ACCORDANCE WITH RULE 61G15-23.004, F.A.C.

TYPICAL SECTION PACKAGE

SHEET NO	SHEET DESCRIPTION
1	COVER SHEET
2	TYPICAL SECTION NO. 1
3	TYPICAL SECTION NO. 2
4	TYPICAL SECTION NO. 3

TYPICAL SECTION APPROVAL:

TECHNICAL SERVICES DIVISION DIRECTOR
OR DESIGNEE

COUNTY ENGINEER

PROJECT CONTROLS

TYPICAL SECTION No. 1

HILLSBOROUGH COUNTY CONTEXT CLASSIFICATION¹

- C1&C2 : RURAL
- C3R : SUBURBAN RESIDENTIAL
- C3C : SUBURBAN COMMERCIAL
- C3T : SUBURBAN TOWN
- C4 : URBAN GENERAL
- LOCAL ROAD

FUNCTIONAL CLASSIFICATION

- ARTERIAL
- COLLECTOR
- RESIDENTIAL LOCAL ROAD
- COMMERCIAL LOCAL ROAD

ACCESS CLASSIFICATION²

- CLASS 2 - RESTRICTIVE
- CLASS 3 - RESTRICTIVE
- CLASS 4 - NON-RESTRICTIVE
- CLASS 5 - RESTRICTIVE
- CLASS 6 - NON-RESTRICTIVE
- CLASS 7 - BOTH MEDIAN TYPES

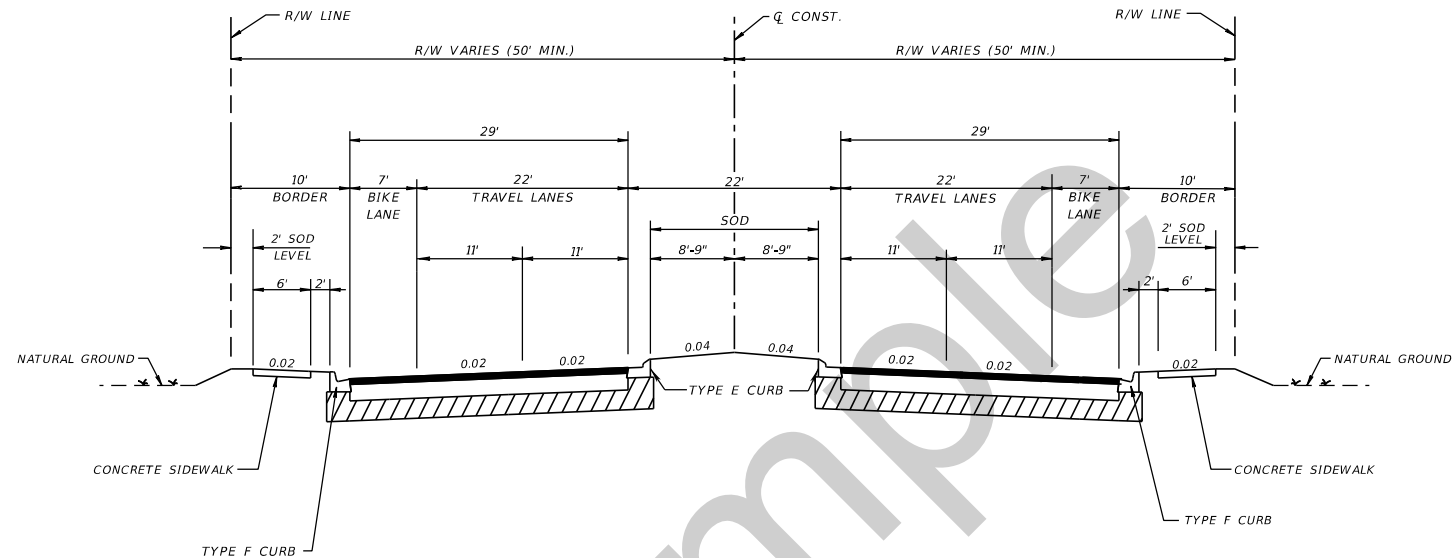
CRITERIA

- NEW CONSTRUCTION / RECONSTRUCTION (ARTERIALS & COLLECTORS)
- RESURFACING (ARTERIALS & COLLECTORS)
- RESURFACING (LOCAL ROADS)

POTENTIAL DESIGN EXCEPTIONS AND DEVIATIONS RELATED TO TYPICAL SECTION:

NOTES:

¹ CONTEXT CLASSIFICATION BASED ON FUTURE LAND USE.
² FOR ACCESS CLASSIFICATION REFERENCE:
 THE HILLSBOROUGH COUNTY LAND DEVELOPMENT CODE
 PART 6.04.00 - ACCESS MANAGEMENT, SECTION 6.04.07.



TYPICAL SECTION SHOWN IS AN EXAMPLE ONLY, REPLACE WITH ACTUAL PROJECT TYPICAL SECTION.

TRAFFIC DATA

CURRENT YEAR = 2022 AADT = 22800
 ESTIMATED OPENING YEAR = 2025 AADT = 25800
 ESTIMATED DESIGN YEAR = 2045 AADT = 30600
 K = 6% D = 55% T = 2% (24 HOUR)
 DESIGN HOUR T = 1%
 DESIGN SPEED = 45 MPH
 TARGET SPEED = 40 MPH

Example

THE OFFICIAL RECORD OF THIS SHEET IS THE ELECTRONIC FILE DIGITALLY SIGNED AND SEALED UNDER RULE 61G15-23.004, F.A.C.

LAST REVISION	REVISION	DESCRIPTION		<p>TYPICAL SECTION PACKAGE TYPICAL SECTION No. 1</p>	INDEX	SHEET
					TSP-002	2 of 4

PROJECT CONTROLS

TYPICAL SECTION No. 2

HILLSBOROUGH COUNTY CONTEXT CLASSIFICATION¹

- C1&C2 : RURAL
- C3R : SUBURBAN RESIDENTIAL
- C3C : SUBURBAN COMMERCIAL
- C3T : SUBURBAN TOWN
- C4 : URBAN GENERAL
- LOCAL ROAD

FUNCTIONAL CLASSIFICATION

- ARTERIAL
- COLLECTOR
- RESIDENTIAL LOCAL ROAD
- COMMERCIAL LOCAL ROAD

ACCESS CLASSIFICATION²

- 2 - RESTRICTIVE
- 3 - RESTRICTIVE
- 4 - NON-RESTRICTIVE
- 5 - RESTRICTIVE
- 6 - NON-RESTRICTIVE
- 7 - BOTH MEDIAN TYPES

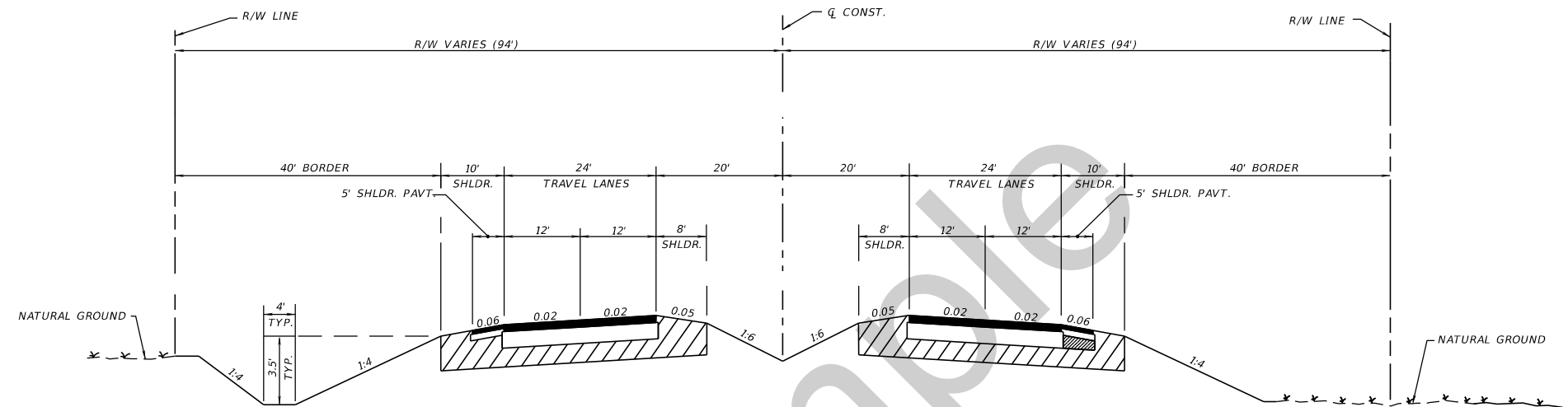
CRITERIA

- NEW CONSTRUCTION / RECONSTRUCTION (ARTERIALS & COLLECTORS)
- RESURFACING (ARTERIALS & COLLECTORS)
- RESURFACING (LOCAL ROADS)

POTENTIAL DESIGN EXCEPTIONS AND DEVIATIONS RELATED TO TYPICAL SECTION:

NOTES:

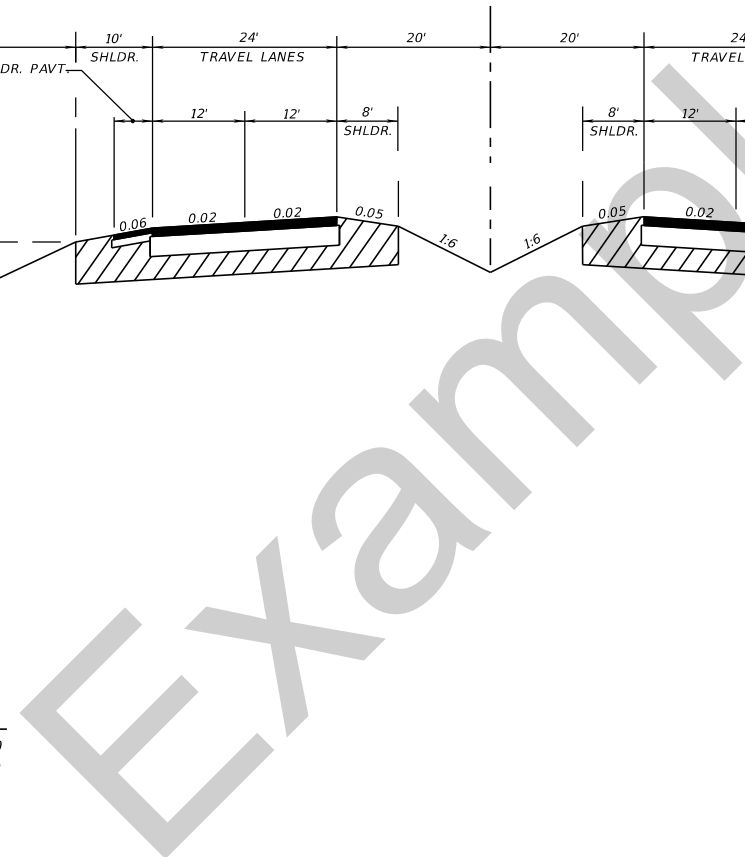
¹ CONTEXT CLASSIFICATION BASED ON FUTURE LAND USE.
² FOR ACCESS CLASSIFICATION REFERENCE:
 THE HILLSBOROUGH COUNTY LAND DEVELOPMENT CODE
 PART 6.04.00 - ACCESS MANAGEMENT, SECTION 6.04.07.



TYPICAL SECTION SHOWN IS AN EXAMPLE ONLY, REPLACE WITH ACTUAL PROJECT TYPICAL SECTION.

TRAFFIC DATA

CURRENT YEAR = 2022 AADT = 22800
 ESTIMATED OPENING YEAR = 2025 AADT = 25800
 ESTIMATED DESIGN YEAR = 2045 AADT = 30600
 K = 6% D = 55% T = 2% (24 HOUR)
 DESIGN HOUR T = 1%
 DESIGN SPEED = 45 MPH
 TARGET SPEED = 40 MPH



THE OFFICIAL RECORD OF THIS SHEET IS THE ELECTRONIC FILE DIGITALLY SIGNED AND SEALED UNDER RULE 61G15-23.004, F.A.C.

LAST REVISION	REVISION	DESCRIPTION		TYPICAL SECTION PACKAGE TYPICAL SECTION No. 2	INDEX	SHEET
					TSP-003	3 of 4

PROJECT CONTROLS

TYPICAL SECTION No. 3

HILLSBOROUGH COUNTY CONTEXT CLASSIFICATION¹

- C1&C2 : RURAL
- C3R : SUBURBAN RESIDENTIAL
- C3C : SUBURBAN COMMERCIAL
- C3T : SUBURBAN TOWN
- C4 : URBAN GENERAL
- LOCAL ROAD

FUNCTIONAL CLASSIFICATION

- ARTERIAL
- COLLECTOR
- RESIDENTIAL LOCAL ROAD
- COMMERCIAL LOCAL ROAD

ACCESS CLASSIFICATION²

- 2 - RESTRICTIVE
- 3 - RESTRICTIVE
- 4 - NON-RESTRICTIVE
- 5 - RESTRICTIVE
- 6 - NON-RESTRICTIVE
- 7 - BOTH MEDIAN TYPES

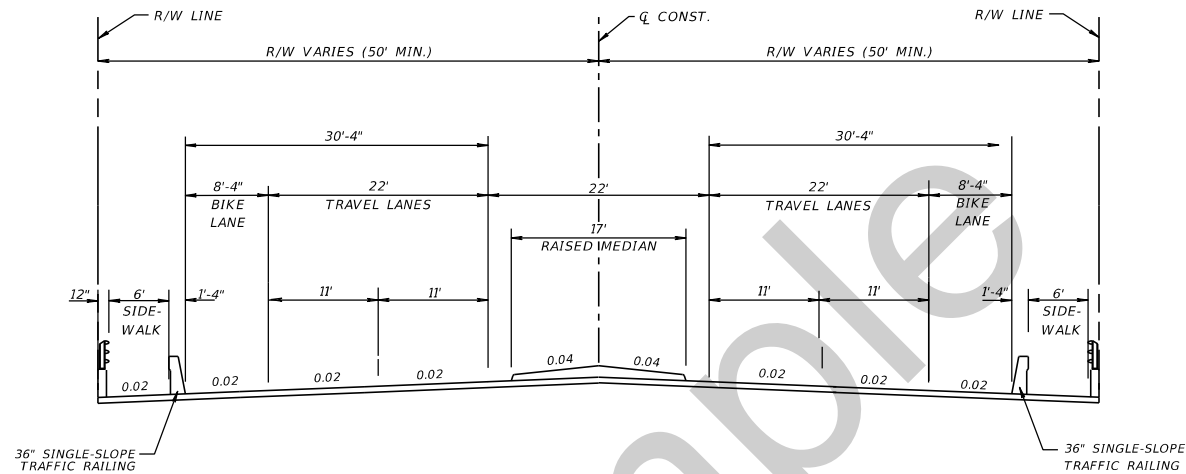
CRITERIA

- NEW CONSTRUCTION / RECONSTRUCTION (ARTERIALS & COLLECTORS)
- RESURFACING (ARTERIALS & COLLECTORS)
- RESURFACING (LOCAL ROADS)

POTENTIAL DESIGN EXCEPTIONS AND DEVIATIONS RELATED TO TYPICAL SECTION:

NOTES:

¹ CONTEXT CLASSIFICATION BASED ON FUTURE LAND USE.
² FOR ACCESS CLASSIFICATION REFERENCE:
 THE HILLSBOROUGH COUNTY LAND DEVELOPMENT CODE
 PART 6.04.00 - ACCESS MANAGEMENT, SECTION 6.04.07.



TYPICAL SECTION SHOWN IS AN EXAMPLE ONLY, REPLACE WITH ACTUAL PROJECT TYPICAL SECTION.

TRAFFIC DATA

CURRENT YEAR = 2022 AADT = 22800
 ESTIMATED OPENING YEAR = 2025 AADT = 25800
 ESTIMATED DESIGN YEAR = 2045 AADT = 30600
 K = 6% D = 55% T = 2% (24 HOUR)
 DESIGN HOUR T = 1%
 DESIGN SPEED = 45 MPH
 TARGET SPEED = 40 MPH

Example

THE OFFICIAL RECORD OF THIS SHEET IS THE ELECTRONIC FILE DIGITALLY SIGNED AND SEALED UNDER RULE 61G15-23.004, F.A.C.

LAST REVISION	REVISION	DESCRIPTION	<p>TYPICAL SECTION PACKAGE TYPICAL SECTION No. 3</p>	INDEX	SHEET
				TSP-004	4 of 4