







# Balm Boyette Scrub Nature Preserve

Conservation  
and  
Environmental Lands Management  
Department

[HCFLGov.net](http://HCFLGov.net)

813-672-7876

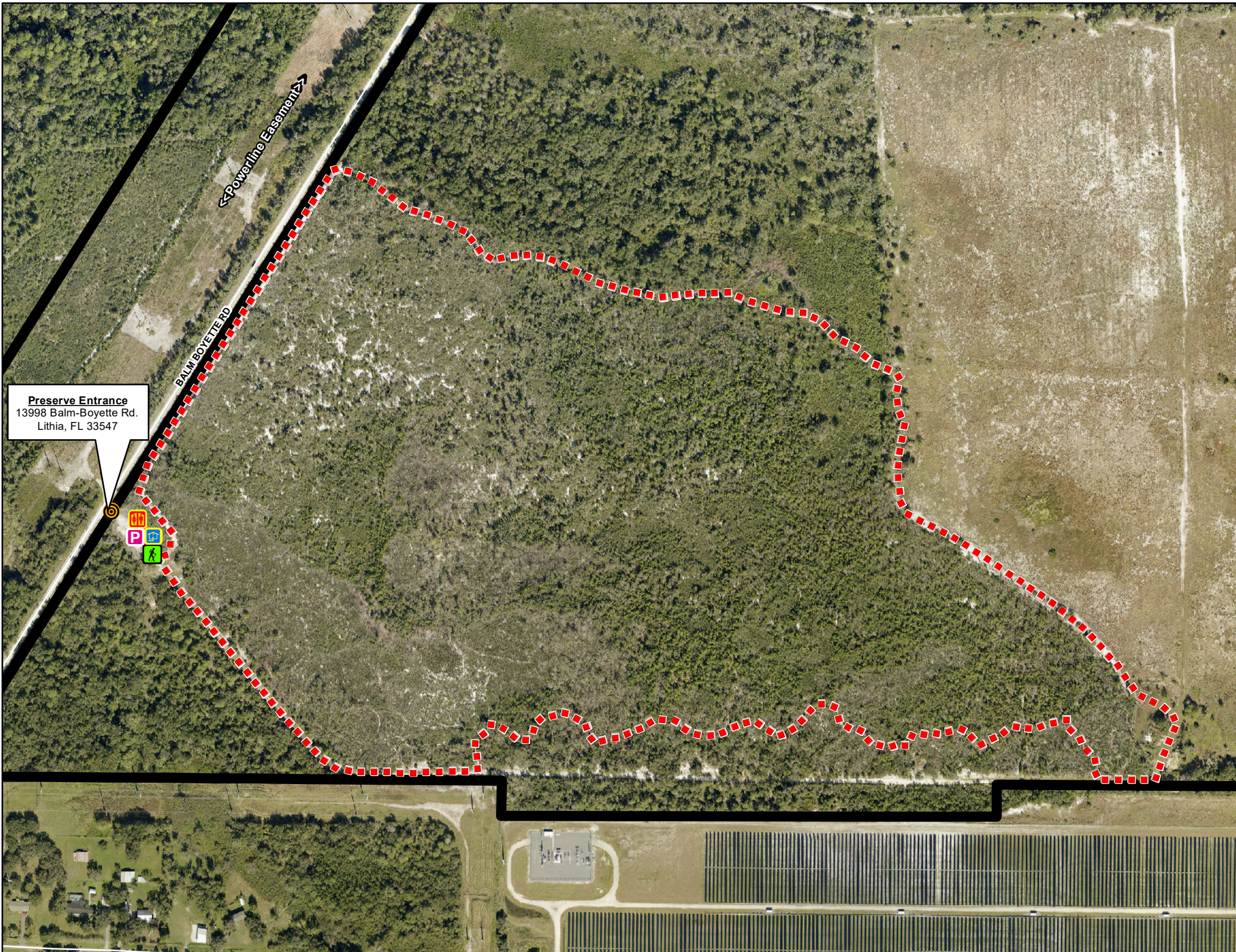
## LEGEND

-  Preserve Entrance
-  Preserve Boundary
-  Parking
-  Restroom
-  Trailhead
-  Kiosk

## PUBLIC TRAILS

Hiking Only Trail

-  Red Trail - 1.95 miles



**Preserve Entrance**  
13998 Balm-Boyette Rd.  
Lithia, FL 33547



0 0.04 0.08 0.12 0.16 0.2 Miles

\*Navigate map with a mobile map app, such as Avenza\*