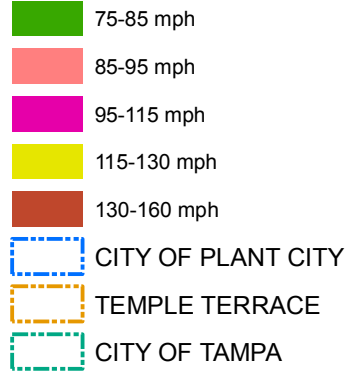
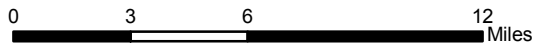
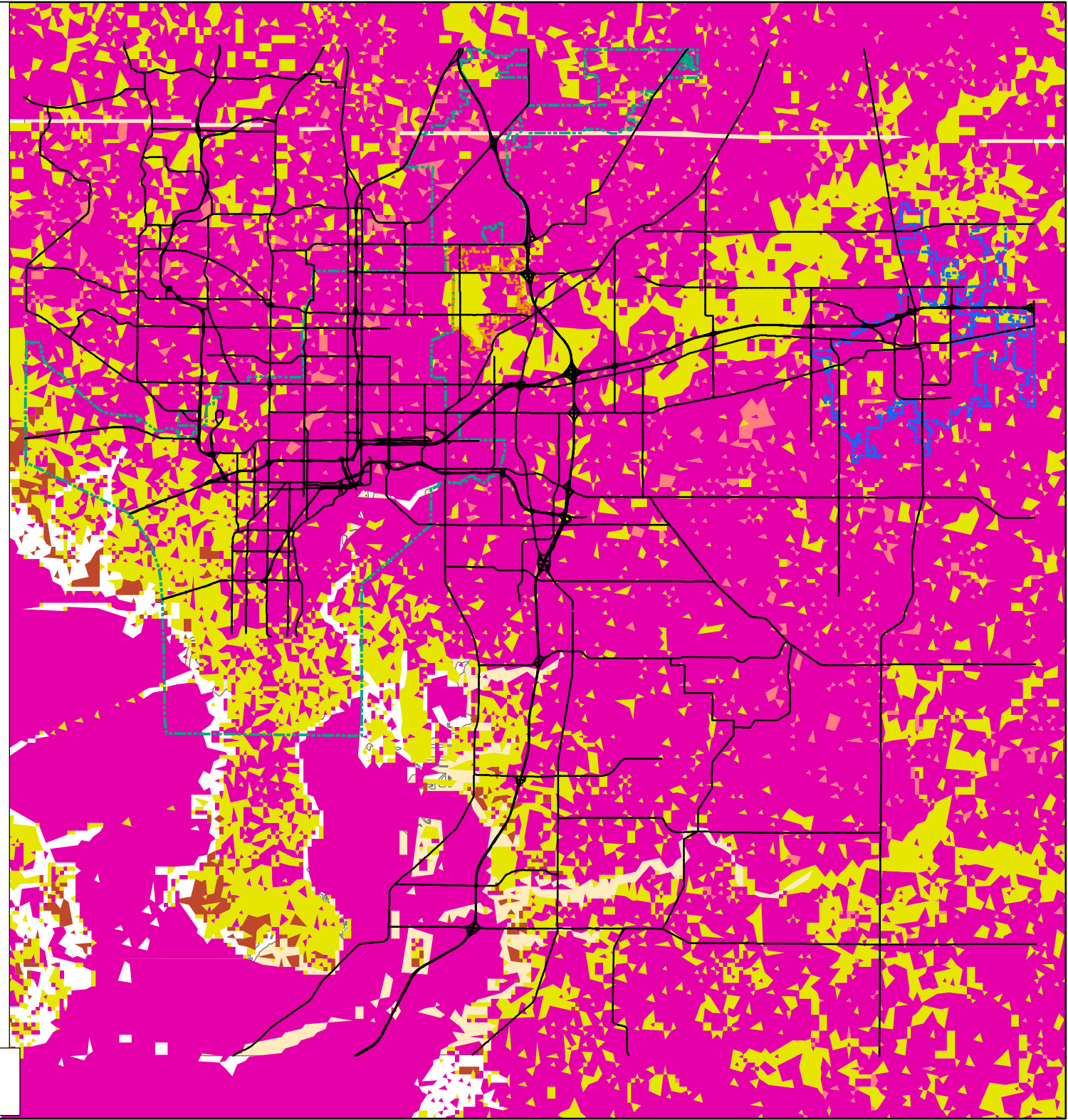








**memphis-wind-category3storm**



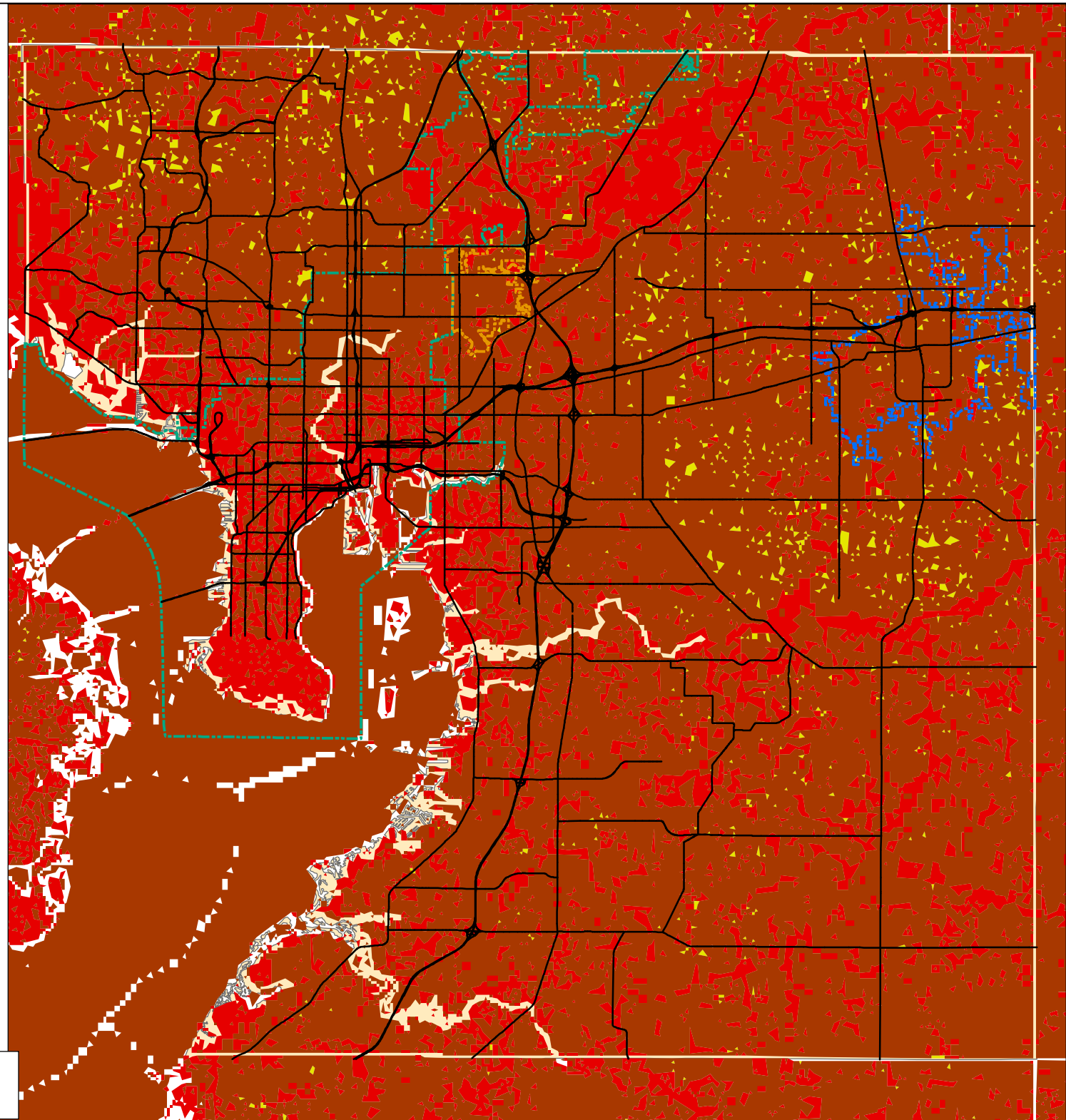
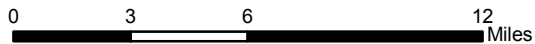
DATA SOURCES: Hillsborough County Real Estate Department and Planning & Growth Management Department. Florida Department of Community Affairs.  
ACCURACY: It is intended that the accuracy of the base map comply with U.S. national map accuracy standards. However, such accuracy, or any other level of accuracy is not guaranteed by Hillsborough County.  
REPRODUCTION: This sheet may not be reproduced in part or full for sale to anyone without specific approval of the Hillsborough County Planning & Growth Management Department.  
USE: For general planning purposes only.












**memphis-wind-category5storm**

-  115-130 mph
-  130-160 mph
-  >160 mph
-  CITY OF PLANT CITY
-  TEMPLE TERRACE
-  CITY OF TAMPA

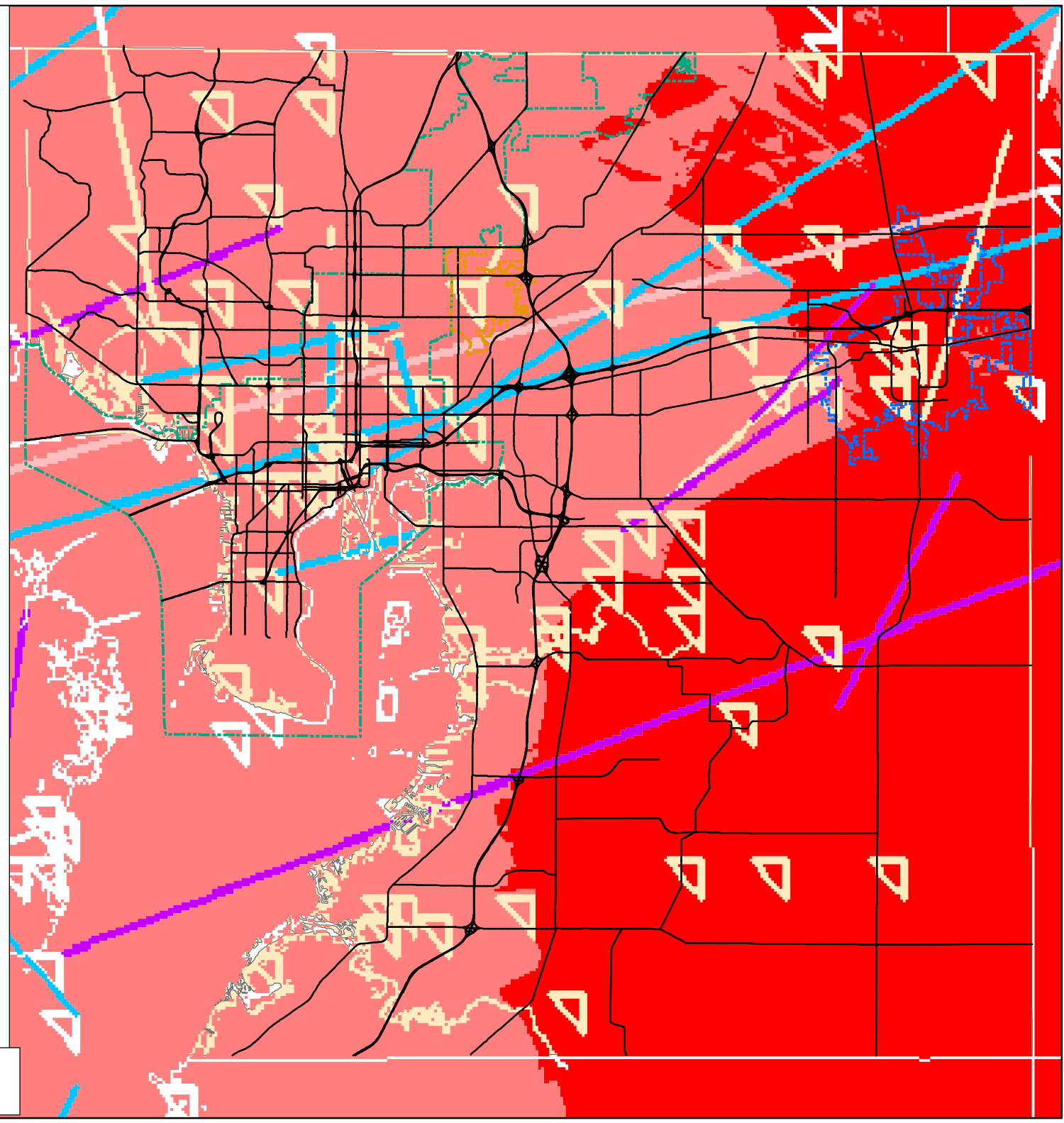
DATA SOURCES: Hillsborough County Real Estate Department and Planning & Growth Management Department. Florida Department of Community Affairs.  
ACCURACY: It is intended that the accuracy of the base map comply with U.S. national map accuracy standards. However, such accuracy, or any other level of accuracy is not guaranteed by Hillsborough County.  
REPRODUCTION: This sheet may not be reproduced in part or full for sale to anyone without specific approval of the Hillsborough County Planning & Growth Management Department.  
USE: For general planning purposes only.



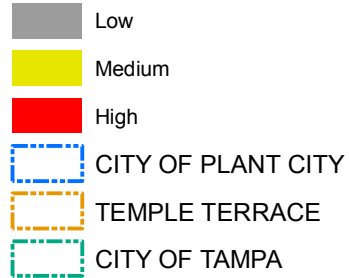
**memphis-tornadoeswithtracks**

-  F3-F5
-  F2
-  F1
-  Probability 1 in 100
-  Probability 1 in 250
-  Probability 1 in 500
-  CITY OF PLANT CITY
-  TEMPLE TERRACE
-  CITY OF TAMPA

DATA SOURCES: Hillsborough County Real Estate Department and Planning & Growth Management Department. Florida Department of Community Affairs.  
ACCURACY: It is intended that the accuracy of the base map comply with U.S. national map accuracy standards. However, such accuracy, or any other level of accuracy is not guaranteed by Hillsborough County.  
REPRODUCTION: This sheet may not be reproduced in part or full for sale to anyone without specific approval of the Hillsborough County Planning & Growth Management Department.  
USE: For general planning purposes only.



**memphis-wildfire**



DATA SOURCES: Hillsborough County Real Estate Department and Planning & Growth Management Department. Florida Department of Community Affairs.  
ACCURACY: It is intended that the accuracy of the base map comply with U.S. national map accuracy standards. However, such accuracy, or any other level of accuracy is not guaranteed by Hillsborough County.  
REPRODUCTION: This sheet may not be reproduced in part or full for sale to anyone without specific approval of the Hillsborough County Planning & Growth Management Department.  
USE: For general planning purposes only.

