


Rhodine Scrub Nature Preserve and Stephen J. Wortham Park

Conservation and Environmental Lands Management Department


HCFLGov.net
813-672-7876

LEGEND


-  Park/Preserve Entrance
-  Preserve Boundary
-  Park Boundary
-  Kiosk
-  Restroom
-  Picnic Shelter
-  Trailhead and Parking (Hiking Access Only)
-  Trailhead and Parking (Equestrian and Hiking Access)
-  Basketball Court
-  Playground
-  Seasonally Wet Crossing
-  Trail Marker


PUBLIC TRAILS


Hiking and Equestrian Trail

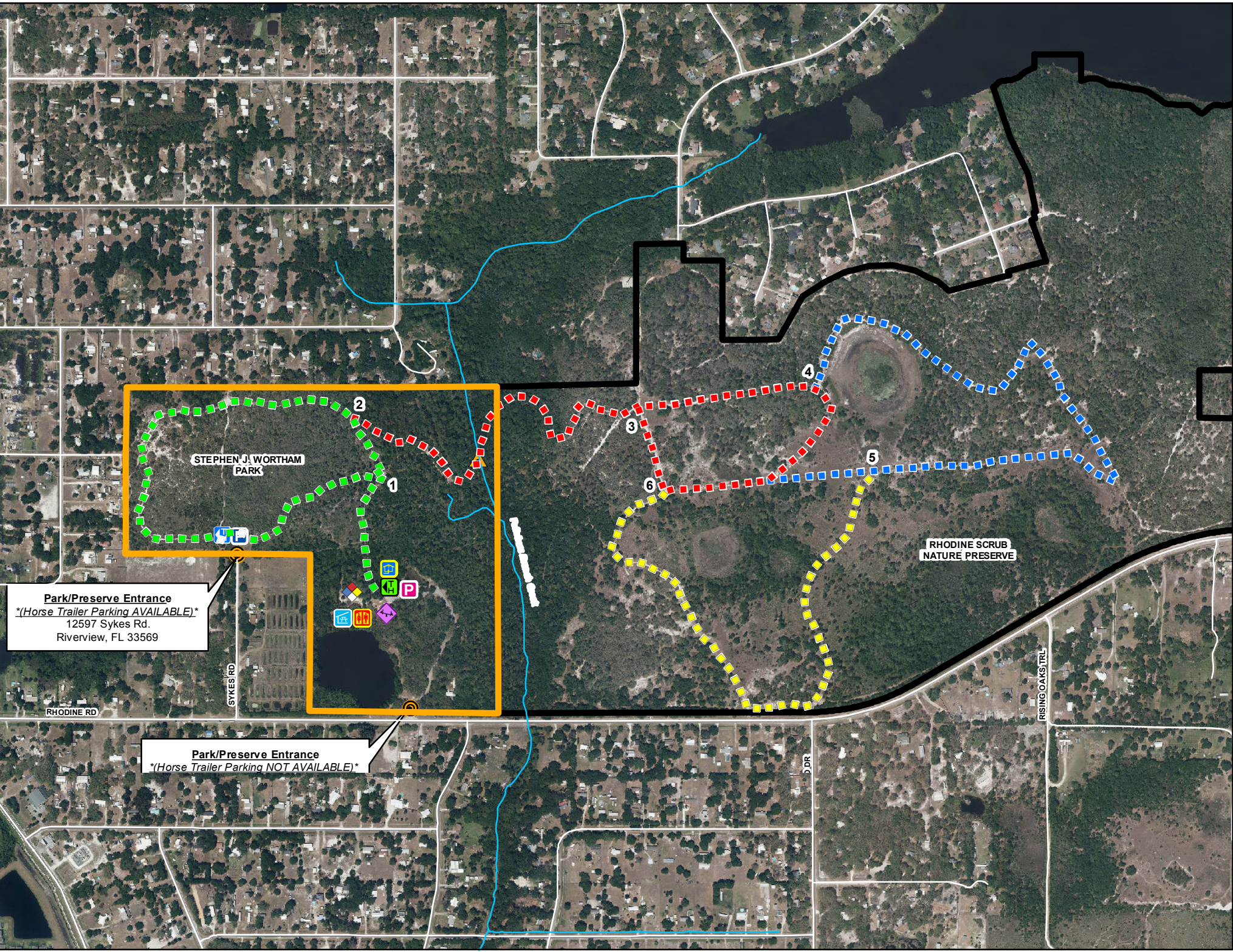
 Green Loop - 1.1 miles

Hiking Only Trails

 Red Loop - 1.2 miles

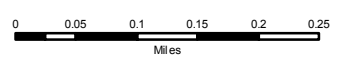
 Blue Loop - 1.1 miles

 Yellow Loop - 0.9 miles



Park/Preserve Entrance
(Horse Trailer Parking AVAILABLE)
12597 Sykes Rd.
Riverview, FL 33569

Park/Preserve Entrance
(Horse Trailer Parking NOT AVAILABLE)



Navigate map with a mobile map app, such as Avenza