

# Lake Dan and Lake Frances Nature Preserves

Conservation  
and  
Environmental Lands Management  
Department

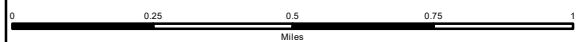
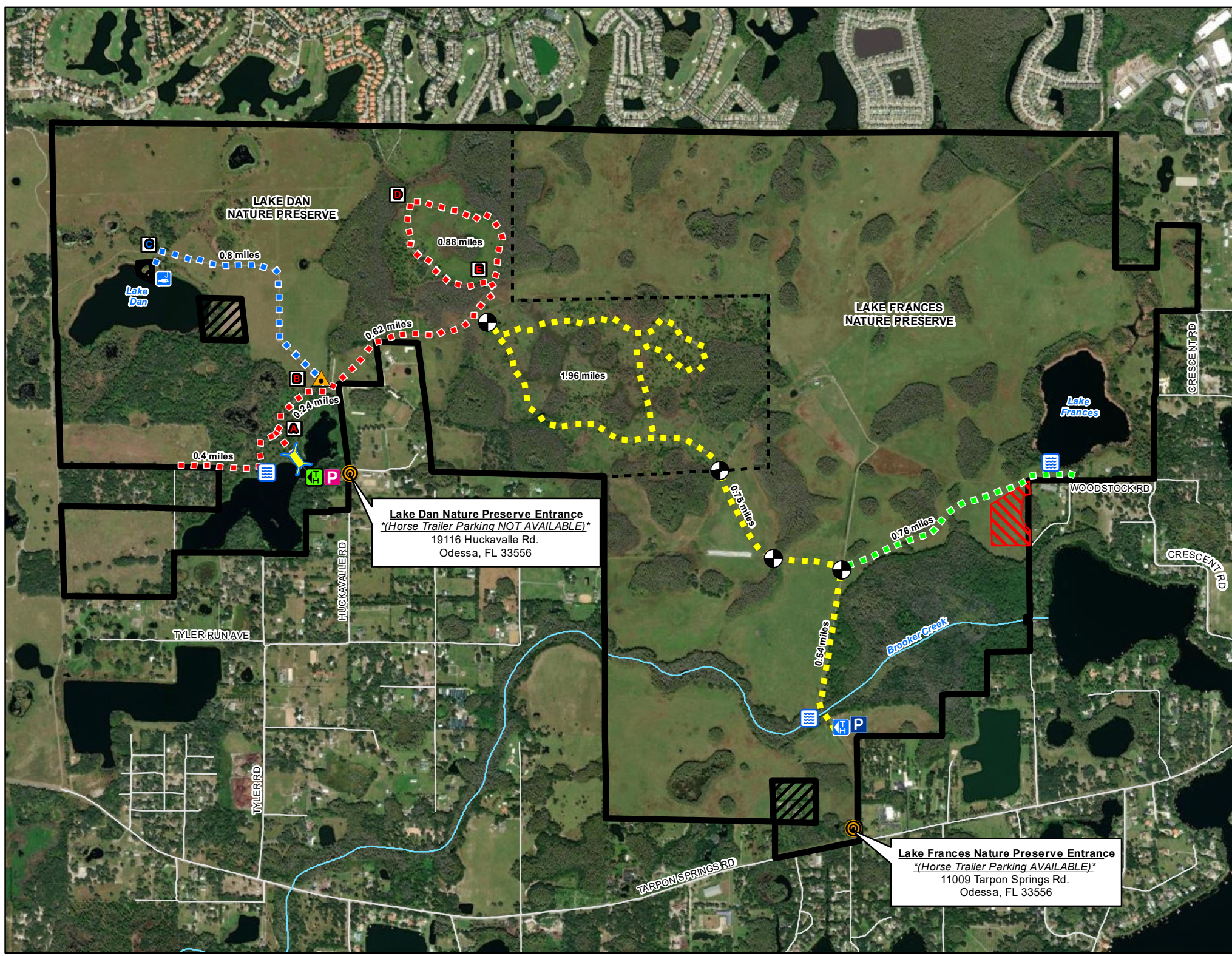
[HCFLGov.net](http://HCFLGov.net)  
813-264-8513

## LEGEND

- Preserve Entrance
- Preserve Boundary
- Trailhead and Parking (Hiking Access Only)  
(Picnic Shelter, Playground)
- Trailhead and Parking (Equestrian and Hiking Access)
- Trail Gates (close after pass-through)
- Horse Watering Point
- Boardwalk
- Walk-over
- Fishing Pier
- Audio Tour
- Private Property
- Inaccessible Area

## PUBLIC TRAILS

- Hiking and Equestrian Trails**
- Central Loop
  - West Loop
  - East Spur
- Hiking Only Trails**
- West Spur



\*Navigate map with a mobile map app, such as Avenza\*