

# Alderman's Ford Conservation Park

Conservation  
and  
Environmental Lands Management  
Department

[HCFLGov.net](http://HCFLGov.net)  
813-987-6204

## LEGEND

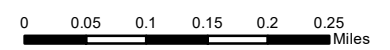
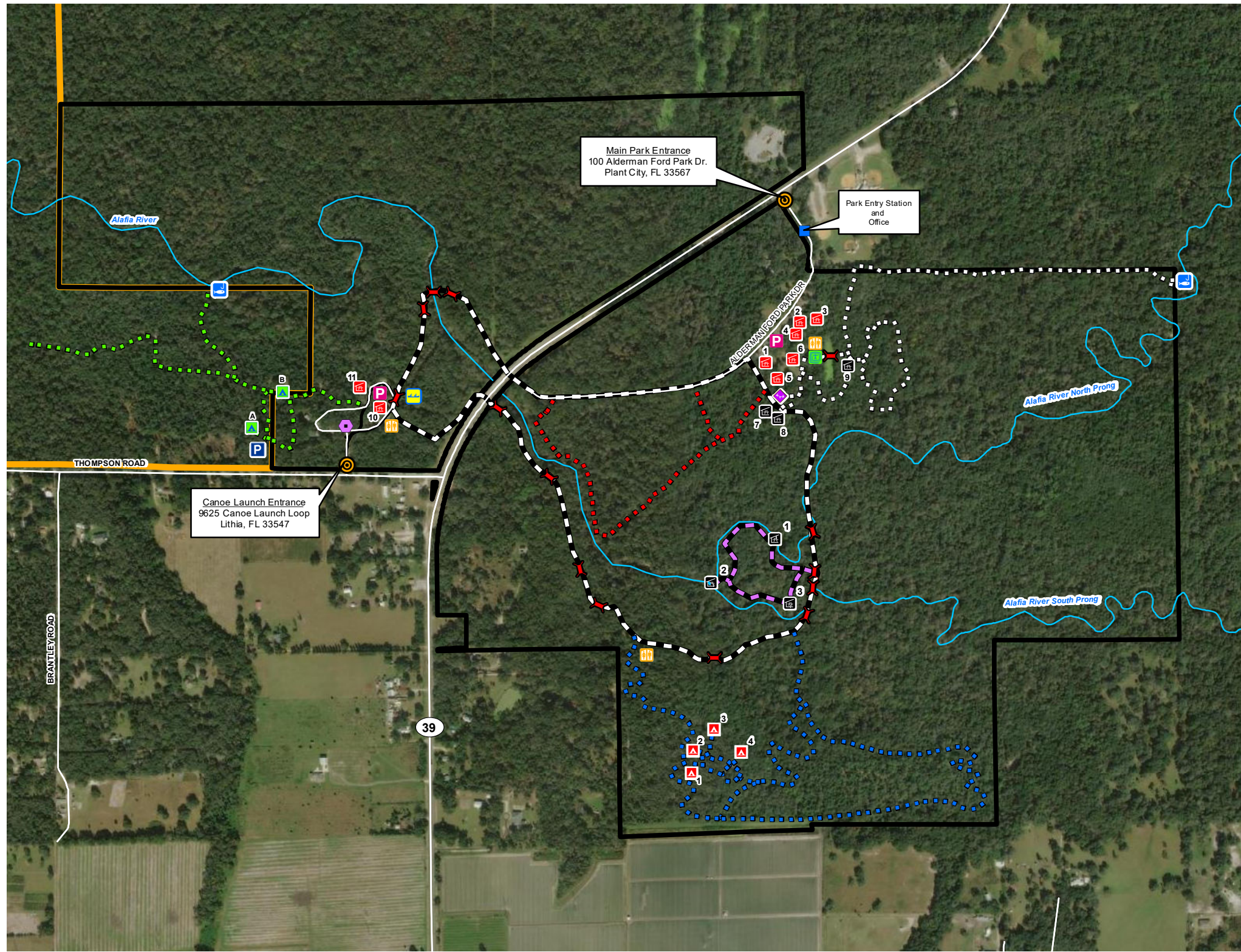
- |  |                           |  |                                 |
|--|---------------------------|--|---------------------------------|
|  | Park Entrance             |  | Playground                      |
|  | Park Boundary             |  | Multi-Purpose Rental Room       |
|  | Parking                   |  | Fishing Spot                    |
|  | Parking Pay Station       |  | Canoe Launch                    |
|  | Restroom                  |  | Bridge                          |
|  | Primitive Camping         |  | Picnic Shelter                  |
|  | Group Camping             |  | Rental Shelter                  |
|  | Parking for Group Camping |  | Alderman's Ford Nature Preserve |

## PUBLIC TRAILS

- Paved Trail - 1.9 miles
- Boardwalk - 0.4 miles

## Hiking Trails

- Green Trail - 0.87 miles
- Red Trail - 0.62 miles
- White Trail - 1.28 miles
- Blue Trail - 1.95 miles



\*Navigate map with a mobile map app, such as Avenza\*